



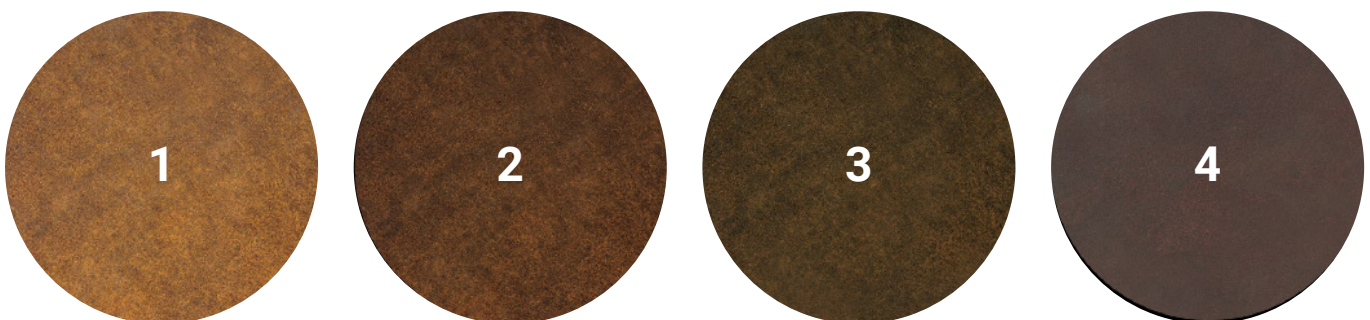
## CORTEN STEEL

### FEATURES AND CYCLES OF AGING CORTEN STEEL

Corten steel, due to its characteristic maturation and oxidation process, is considered a “live” material that can change over time in shades and hues. These changes depend on the shape of the object, its installation position, and the weathering cycles it undergoes. To initiate the corten steel maturation process, City Design uses an oxidation process through weathering. This system gives corten a distinctive non-uniform appearance, with varying shades of colour, especially noticeable in welded areas where the patina forms more slowly.

Colour variations are not defects but inherent features of the material. The average stabilisation period for corten, during which it develops its typical “testa di moro” (brown) colour, is about 12 to 18 months with adequate weathering. During this maturation process, corten may release oxide (“wash-out”), potentially staining surfaces beneath the products. This is a natural and expected behavior of the material.

To reduce wash-out, City Design offers a specific “ANTI-WASHOUT” treatment upon request for an additional cost. While this treatment does not completely eliminate oxide runoff, it significantly reduces it and gives the product a darker, more refined appearance.



The reproduction of the shades shown on paper is only indicative. Upon request, platelet samples can be provided.

1. Appearance/shades of oxidized product at the time of delivery (approximately 2 months of oxidation).
2. Appearance/shades of oxidized product after approximately 4/6 months from its installation.
3. Appearance/shades of the product at the end of the period of oxidation after about 12/18 months of installation
4. Corten steel with “Anti-washout” Metalco special treatment