

LOOP LINE

SKU: 301.1328



PLASTIC SEATING SPECIFICATION DATA



Description

The Loop Line is a modular, linear outdoor seating element designed to create flexible and informal seating layouts in public-realm environments. With its clean, straight profile and robust construction, it can be used as a standalone bench or combined with other Loop modules to define spaces and encourage social interaction. Manufactured from durable, low-maintenance materials, Loop Line is ideal for parks, schools, playgrounds and urban public spaces.

Standard Dimensions

Length x Width x Height (mm)
2000 x 400 x 400



Bailey Street Furniture Group | Adlington Business Park | London Road | Adlington | Cheshire | SK10 4NL | United Kingdom

w: www.bsfg.co.uk | t: 01625 322888 | e: enquiries@bsfg.co.uk

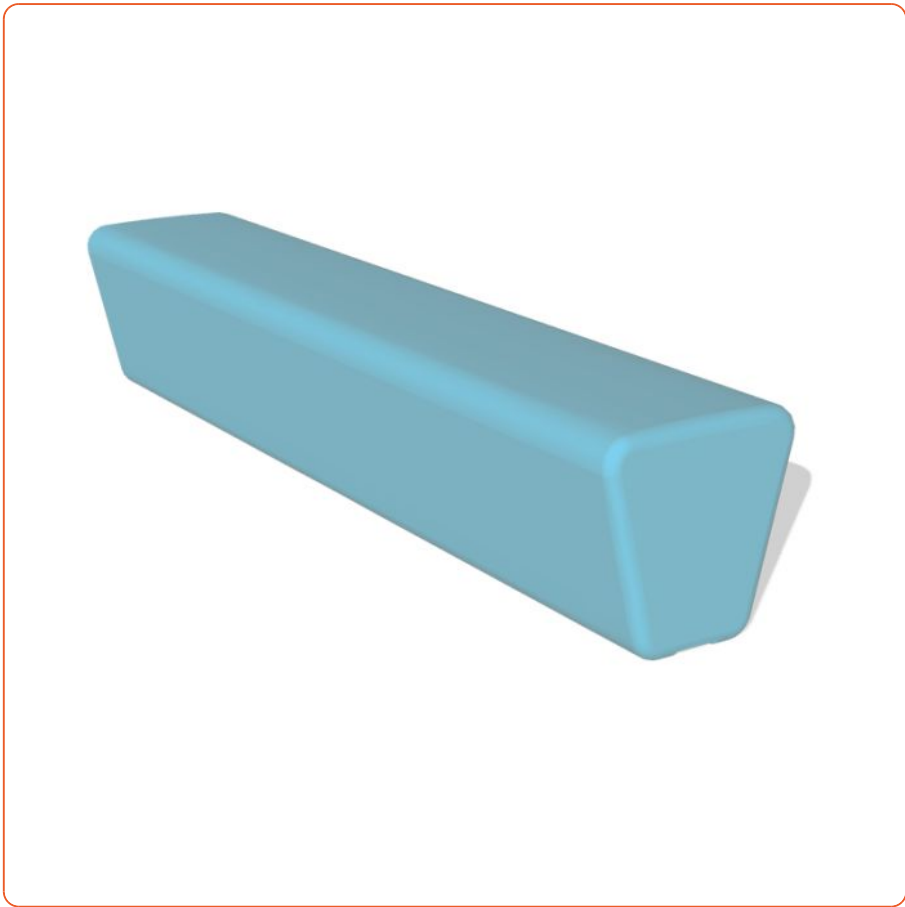
Company Registration No. 5269442 VAT No. 849 4437 86

LOOP LINE

SKU: 301.1328



PLASTIC SEATING SPECIFICATION DATA



2D DWG Available	Yes
3D DWG Available	Yes
Country of Origin	Denmark
Depth	400 mm
Expected Lifetime	30 Years
Height	400 mm
Length	2000 mm
Material	Rotation Moulded Polyethylene
Mounting Options	Free Standing
NBS Source Listed	Yes



LOOP LINE

SKU: 301.1328



Number of Seats	4
Out-Sider PE Colours	#15 Pastel Blue RAL 5024 Premium, #50 White RAL 9003 Premium, #13 Grey RAL 7015 Premium, #9 Purple RAL 4004 Premium, #2 Lime Green RAL 120 70 60 Standard, #16 Mokka Brown RAL 8028 Premium, #3 Orange RAL 2003 Standard, #4 Yellow RAL 1018 Premium, Recycled Plastic, #18 Olive Green RAL 6025 Premium, #11 Sandstone Premium, #17 Blue RAL 5010 Premium, #1 Red RAL 3020 Standard
Planter Shape	Straight
Recyclable	Yes
Seat Depth	400 mm
Seat Height	400 mm
Seat Length	2000 mm
Weight	22 kg

PLASTIC SEATING SPECIFICATION DATA



Bailey Street Furniture Group | Adlington Business Park | London Road | Adlington | Cheshire | SK10 4NL | United Kingdom

w: www.bsfg.co.uk | t: 01625 322888 | e: enquiries@bsfg.co.uk

Company Registration No. 5269442 VAT No. 849 4437 86