

ROOSEVELT SEATING

SKU: 301.0201



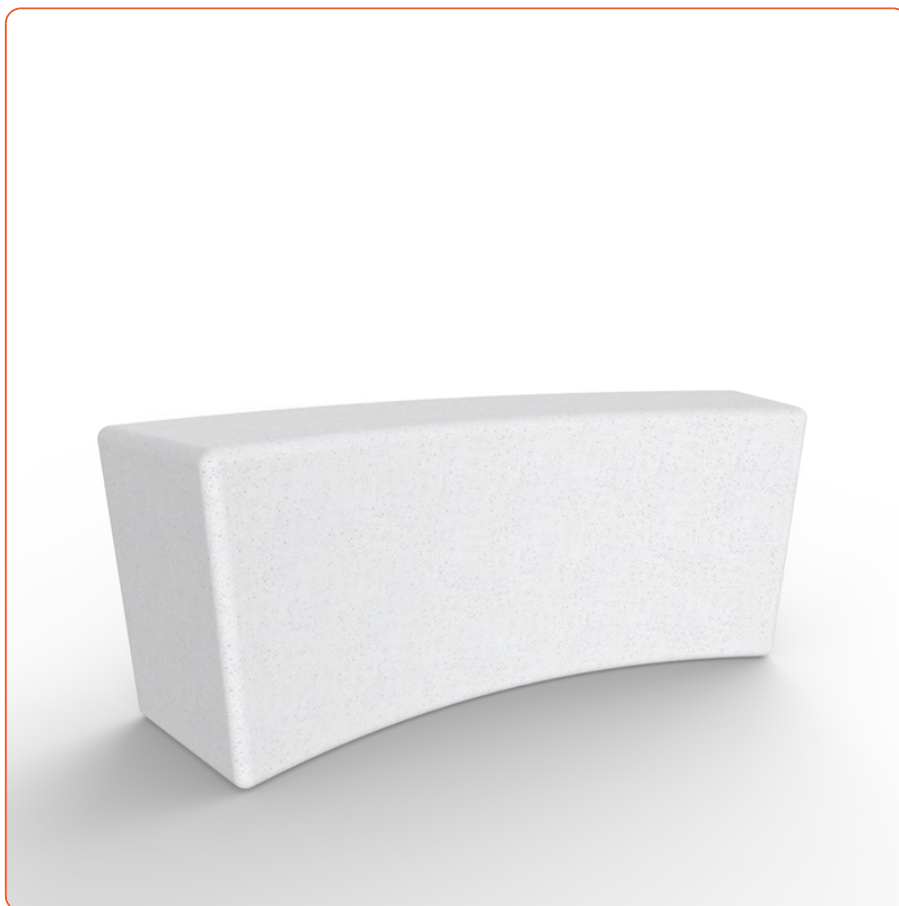
Description

A contemporary curved concrete bench designed for high-traffic public realm, the Roosevelt Bench blends minimalist form with exceptional durability for streetscapes, campuses and civic spaces. Manufactured from standard precast concrete with an acid-etched finish and sealed prior to dispatch, it delivers a refined, tactile surface that stands up to the elements. Available in Light Grey, Buff, White and Black with options including Light Exposed Aggregate, Fully Polished or Polished Top, the Roosevelt brings timeless design to landscapes seeking robust, low-maintenance seating. Dimensions L1168mm x D300mm x H450mm, approx. 375kg.

Standard Dimensions

Length x Width x Height (mm)

1168 x 300 x 450



Country of Origin

United Kingdom

Depth

300 mm



Bailey Street Furniture Group | Adlington Business Park | London Road | Adlington | Cheshire | SK10 4NL | United Kingdom

w: www.bsfg.co.uk | t: 01625 322888 | e: enquiries@bsfg.co.uk

Company Registration No. 5269442 VAT No. 849 4437 86

ROOSEVELT SEATING

SKU: 301.0201



Height	450 mm
Internal Radius	1200 mm
Length	1168 mm
Material	Concrete
Mounting Options	Free Standing
Number of Seats	3
Planter Shape	Curved
Seat Depth	300 mm
Seat Height	450 mm
Seat Length	1168 mm
Weight	378 kg



Bailey Street Furniture Group | Adlington Business Park | London Road | Adlington | Cheshire | SK10 4NL | United Kingdom

w: www.bsfg.co.uk | t: 01625 322888 | e: enquiries@bsfg.co.uk

Company Registration No. 5269442 VAT No. 849 4437 86