

WESTMINSTER SEATING

SKU: 301.0236



CONCRETE & STONE SEATING SPECIFICATION DATA



Bailey Street Furniture Group | Adlington Business Park | London Road | Adlington | Cheshire | SK10 4NL | United Kingdom

w: www.bsfg.co.uk | t: 01625 322888 | e: enquiries@bsfg.co.uk

Company Registration No. 5269442 VAT No. 849 4437 86

WESTMINSTER SEATING

SKU: 301.0236



Description

Westminster Seating is a robust, low-maintenance range of concrete seating elements designed for high-use public-realm environments. With a simple linear form and a choice of refined finishes, the range delivers durable, contemporary seating that integrates seamlessly into urban landscapes. Manufactured from precast concrete, Westminster Seating is ideal for civic spaces, universities, healthcare environments and public plazas.

Standard Dimensions

Length x Width x Height (mm)

- 1950 x 600 x 450
- 2338 x 600 x 450
- 1970 x 600 x 450
- 1200 x 600 x 450
- 1775 x 600 x 450
- 1175 x 600 x 450
- 1150 x 600 x 450
- 2350 x 600 x 450
- 1200 x 1200 x 450
- 1450 x 600 x 450
- 600 x 600 x 450
- 2400 x 600 x 450
- 1975 x 600 x 450
- 1475 x 600 x 450
- 2000 x 600 x 450
- 1800 x 600 x 450
- 1500 x 600 x 450
- 2375 x 600 x 450



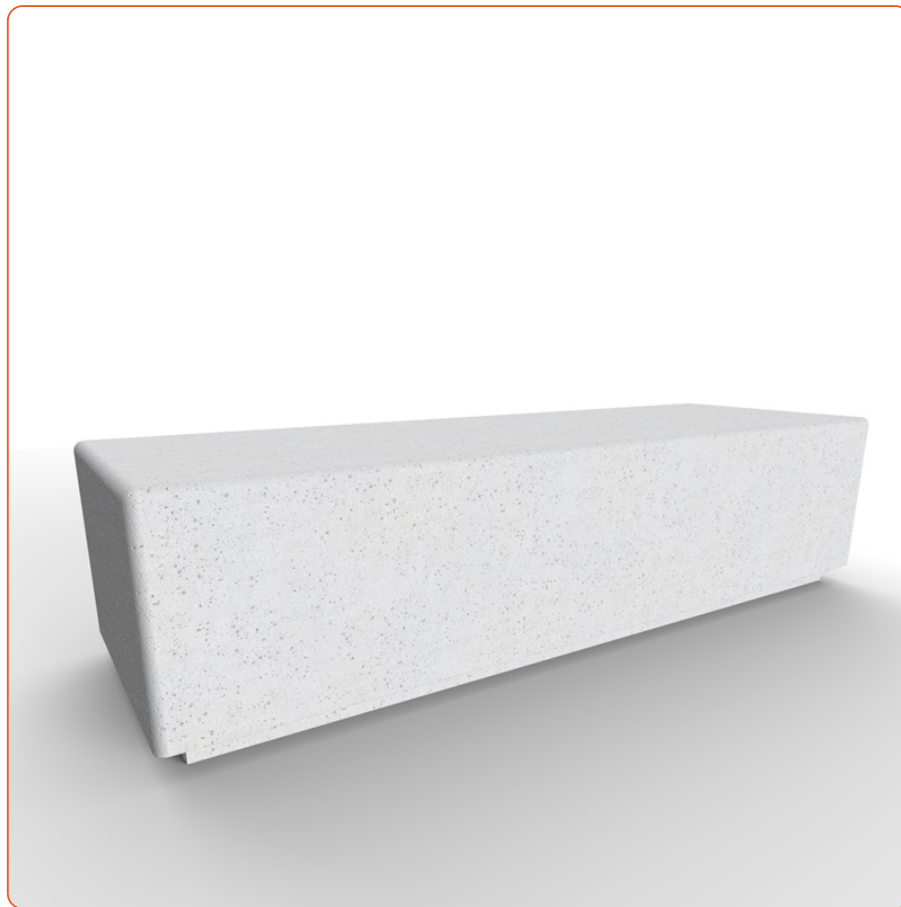
Bailey Street Furniture Group | Adlington Business Park | London Road | Adlington | Cheshire | SK10 4NL | United Kingdom

w: www.bsfg.co.uk | t: 01625 322888 | e: enquiries@bsfg.co.uk

Company Registration No. 5269442 VAT No. 849 4437 86

WESTMINSTER SEATING

SKU: 301.0236



Colour

Standard, Black, Red, White, Steel Blue, Sandstone, Green, No, Terracotta, Cave, Recycled Anthracite, Golden Yellow, Orange, Corten, Yellow and Black Boom, Blue Notte, Red and White Boom, Green Modo, Lime Green, Olive Green, Pastel Blue, Beige, Blue, Variant, Yellow, Dark Grey, Patina Green

Concrete Colour

Light Grey LG02, Grey LG01, White WH03

Country of Origin

United Kingdom

Depth

600 mm, 1200 mm

External Radius

2600 °

Height

450 mm



Bailey Street Furniture Group | Adlington Business Park | London Road | Adlington | Cheshire | SK10 4NL | United Kingdom

w: www.bsfg.co.uk | t: 01625 322888 | e: enquiries@bsfg.co.uk

Company Registration No. 5269442 VAT No. 849 4437 86

WESTMINSTER SEATING

SKU: 301.0236



Internal Radius	2000 mm, 906 mm
Length	2400 mm, 1500 mm, 1450 mm, 1175 mm, 600 mm, 1950 mm, 1200 mm, 2350 mm, 1775 mm, 1150 mm, 1800 mm, 2000 mm, 2375 mm, 1475 mm, 2338 mm, 1970 mm, 1975 mm
Material	Concrete
Mounting Options	Free Standing
Number of Seats	6, 1, 3
Seat Depth	1200 mm, 600 mm
Seat Height	450 mm
Seat Length	2375 mm, 1175 mm, 1950 mm, 2350 mm, 2000 mm, 1775 mm, 1500 mm, 1970 mm, 600 mm, 1577 mm, 1150 mm, 2400 mm, 1800 mm, 1200 mm, 1475 mm, 1975 mm, 1450 mm
Seating Shape	Curved, Straight
Shape	Straight, Curved
Weight	1495 kg, 1135 kg, 375 kg, 945 kg, 755 kg, 1520 kg, 920 kg, 935 kg, 1250 kg, 1265 kg, 745 kg, 1240 kg, 1505 kg, 1525 kg, 730 kg, 1100 kg



Bailey Street Furniture Group | Adlington Business Park | London Road | Adlington | Cheshire | SK10 4NL | United Kingdom

w: www.bsfg.co.uk | t: 01625 322888 | e: enquiries@bsfg.co.uk

Company Registration No. 5269442 VAT No. 849 4437 86