

CLARKSON PLANTER

SKU: 304.0344



Description

The Clarkson planter is an elegant, trough-style precast concrete unit that brings a modern edge to public realm schemes and streetscapes. Available in grey, buff, white, black or specialist colours, with acid-etched, polished or exposed aggregate finishes, it offers refined design flexibility. Measuring 4496 x 2794 x 500 mm, this large-scale planter supports bold planting schemes and can be surface-mounted or root-fixed with drainage and liners. Archive-sealed for weather resistance and topped with optional timber seating, it blends durability with aesthetic impact for architects and contractors.

Standard Dimensions

Length x Width x Height (mm)

4496 x 2794 x 500

CONCRETE & STONE PLANTERS SPECIFICATION DATA



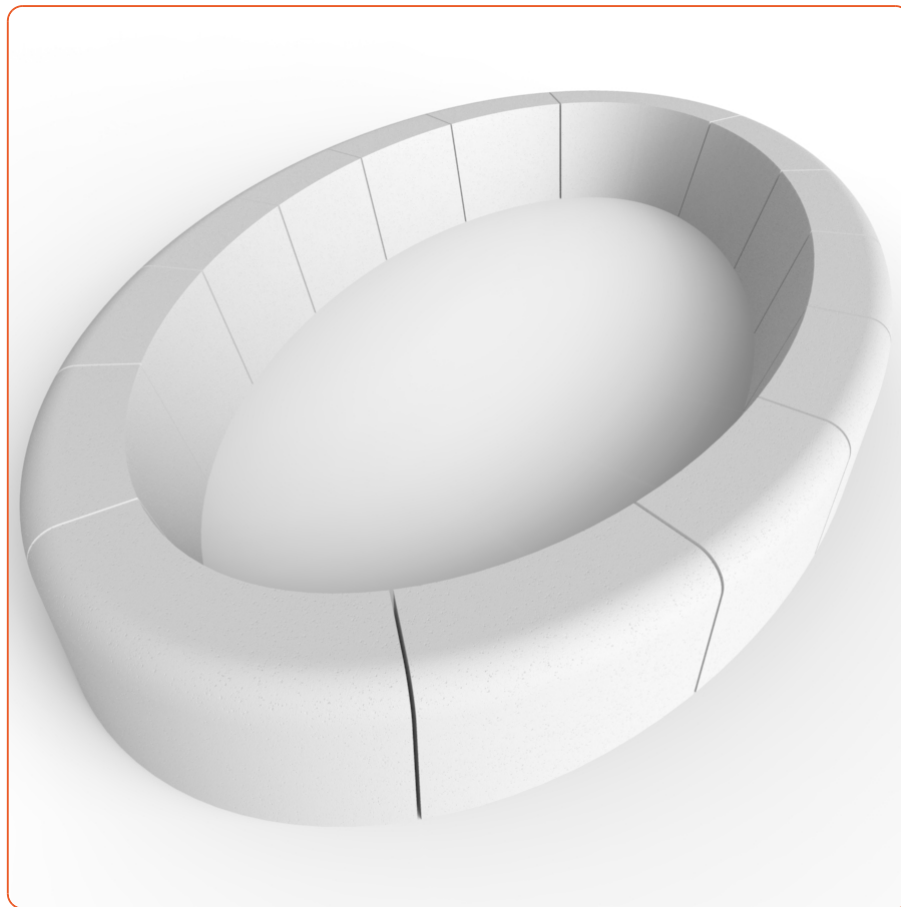
Bailey Street Furniture Group | Adlington Business Park | London Road | Adlington | Cheshire | SK10 4NL | United Kingdom

w: www.bsfg.co.uk | t: 01625 322888 | e: enquiries@bsfg.co.uk

Company Registration No. 5269442 VAT No. 849 4437 86

CLARKSON PLANTER

SKU: 304.0344



Country of Origin	United Kingdom
Depth	2794 mm
Has Backrest	No
Has Seating	Yes
Height	500 mm
Length	4496 mm
Material	Concrete
Mounting Options	Free Standing
Planter Shape	Circular
Position of Seating	Top



Bailey Street Furniture Group | Adlington Business Park | London Road | Adlington | Cheshire | SK10 4NL | United Kingdom

w: www.bsfg.co.uk | t: 01625 322888 | e: enquiries@bsfg.co.uk

Company Registration No. 5269442 VAT No. 849 4437 86

CLARKSON PLANTER

SKU: 304.0344



Seat Height	500 mm
Seat Material	Timber
Weight	5440 kg



Bailey Street Furniture Group | Adlington Business Park | London Road | Adlington | Cheshire | SK10 4NL | United Kingdom

w: www.bsfg.co.uk | t: 01625 322888 | e: enquiries@bsfg.co.uk

Company Registration No. 5269442 VAT No. 849 4437 86